



Improving cloud modelling for better weather and climate prediction

The turbulent behaviour of clouds is the reason for many of the uncertainties in weather and climate prediction. Researchers at the University of St Andrews and University of Leeds have worked with staff at EPCC to develop software which allows vastly improved computational modelling of clouds.

Current weather and climate models struggle to resolve the complex details of the interactions between clouds and their environment.

A team of researchers from the University of St Andrews and University of Leeds had previously developed a new numerical model, MPIC (Moist Parcel-In-Cell), which deals with the dynamics of clouds. These researchers have now incorporated this code into a community code used by atmospheric scientists around the UK, the MONC (Met Office NERC Cloud) framework.

The resulting new PMPIC (Parallel Moist Parcel-In-Cell) code can now be run on many thousands of processors on supercomputers such as ARCHER. Compared to the original MPIC code, this permits much larger simulations to be carried out, allowing the dynamics of the cloud to be resolved in much greater detail. This is particularly important at the edge of the cloud, where evaporation of cloud droplets and the difference in velocity between the cloud and its environment create turbulence.



University of
St Andrews



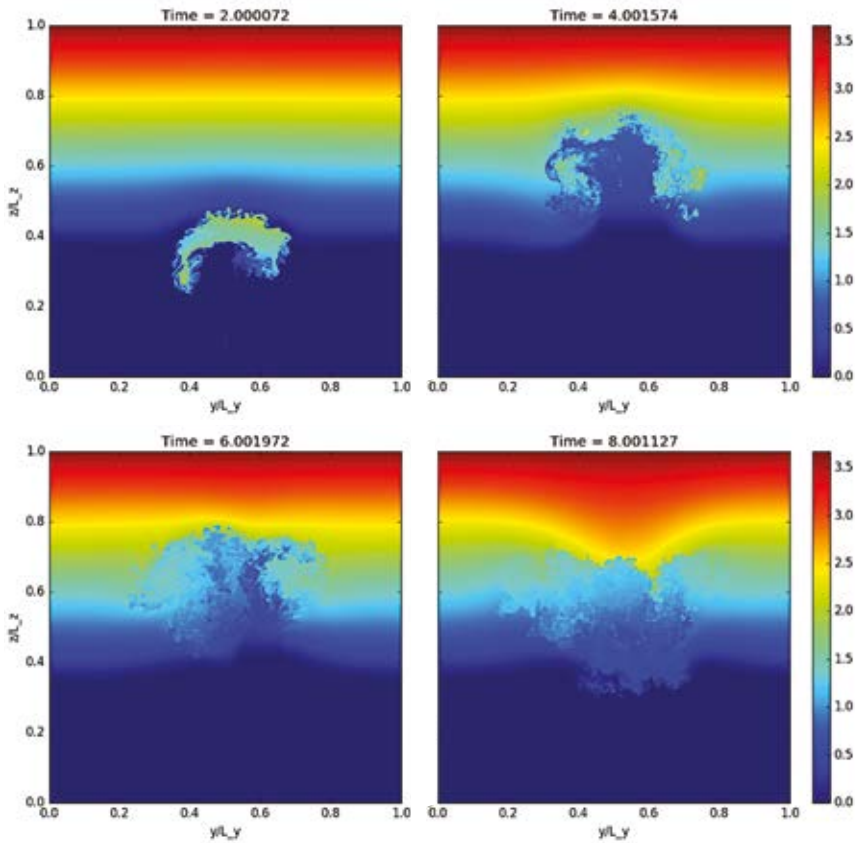
UNIVERSITY OF LEEDS



THE UNIVERSITY
of EDINBURGH



www.archer2.ac.uk



Example evolution of the buoyancy in a simulation with 864^3 grid cells



By adopting and building on the existing MONC framework, the researchers aimed to make MPIC easy for the UK weather and climate communities to adopt. The MONC community is the first in the world to benefit from access to an atmospheric model based on this novel methodology.

Improvements made to the MPIC codebase have also led to the code running significantly faster. The new code is widely adaptable and could in future be used to model other aspects of the atmosphere, including atmospheric chemistry and the behaviour of rain and snow. It could also be applied to other fields of research, including ocean modelling, astrophysics, and modelling of gravity currents.

Reference:

This work was carried out in an ARCHER eCSE project (A fully Lagrangian dynamical core for the Met Office NERC Cloud Model: <https://www.archer.ac.uk/community/eCSE/eCSE12-10/eCSE12-10.php>)

Contact:

David Dritschel (University of St Andrews)
 Nick Brown, Michèle Weiland and Gordon Gibb (EPCC)
 Doug Parker, Alan Blyth and Steven Böing (University of Leeds)

About ARCHER2

ARCHER2 is the UK's National Supercomputing Service, a world class advanced computing resource for UK researchers. ARCHER2 is provided by UKRI, EPCC, Cray (an HPE company) and the University of Edinburgh.

ARCHER2 is the latest in a series of National Supercomputing Services provided to UK researchers. This service will replace ARCHER, the current National System. The simulations in this case study were carried out on the ARCHER system.

See: www.archer.ac.uk

The eCSE Programme

The Embedded CSE (eCSE) programme provides funding to the ARCHER2 user community to develop software in a sustainable manner to run on ARCHER2. Funding enables the employment of a researcher or code developer to work specifically on the relevant software to enable new features or improve the performance of the code.



www.archer2.ac.uk