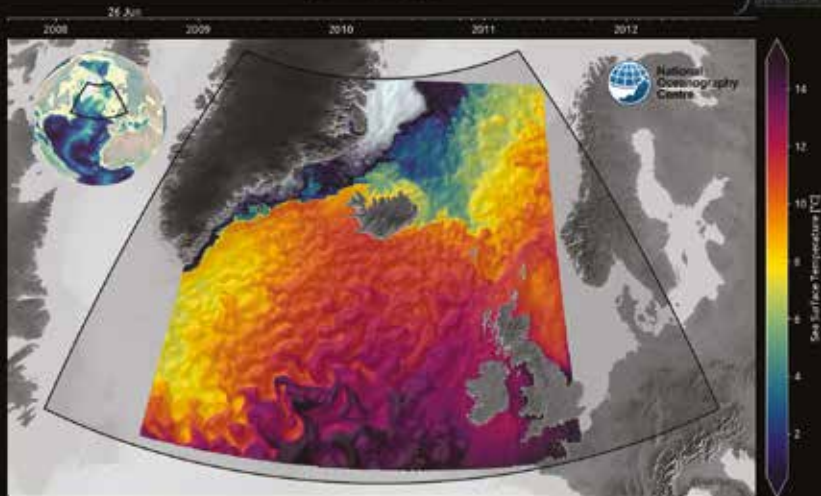




Experiment: GSRIDGE14Z



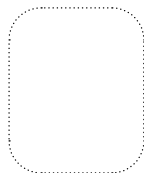
The UK's National Supercomputing Service

Sea surface temperature and ice concentration in the Greenland-Scotland Ridge region

This image is from a video showing the evolution of sea surface temperature (colour) and ice concentration (grey shades) in an ocean simulation covering the Greenland-Scotland Ridge. The simulation was designed and performed by the National Oceanography Centre as part of the IMMERSE project.

Dr Mattia Almansi (Marine Systems Modelling – National Oceanography Centre)

Image Competition: Early Career Researcher Entry and Overall Winner 2021



www.archer2.ac.uk

.....

.....

.....

.....